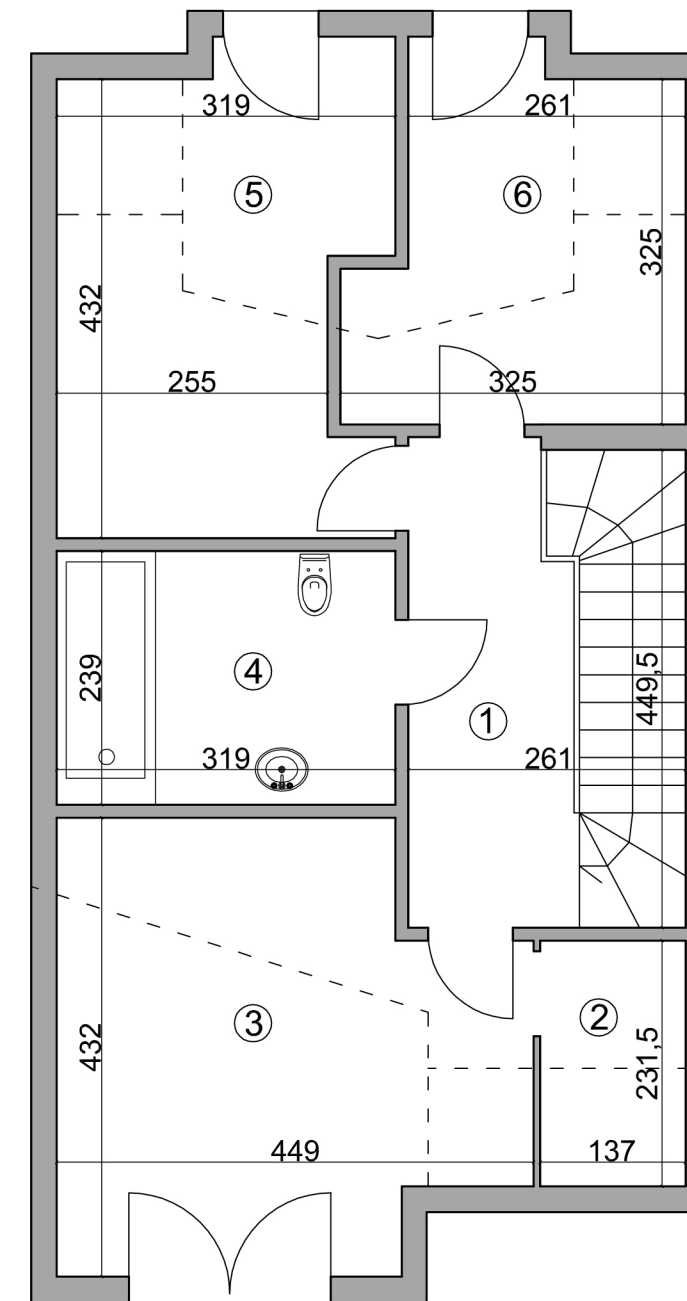


RZUT PARTERU

| | |
|--------------------|---------------------|
| 1.PRZEDSIONEK | 5,32m ² |
| 2.GARAŻ | 17,7m ² |
| 3.HOL | 3,16m ² |
| 4.ŁAZIENKA | 2,00m ² |
| 5.KUCHNIA | 10,81m ² |
| 6.SALON + JADALNIA | 19,18m ² |



RZUT PIĘTRA

| | |
|-------------|---------------------|
| 1.HOL | 6,7m ² |
| 2.GARDEROBA | 3,15m ² |
| 3.POKÓJ I | 16,84m ² |
| 4.ŁAZIENKA | 7,62m ² |
| 5.POKÓJ II | 13,37m ² |
| 6.POKÓJ III | 9,9m ² |